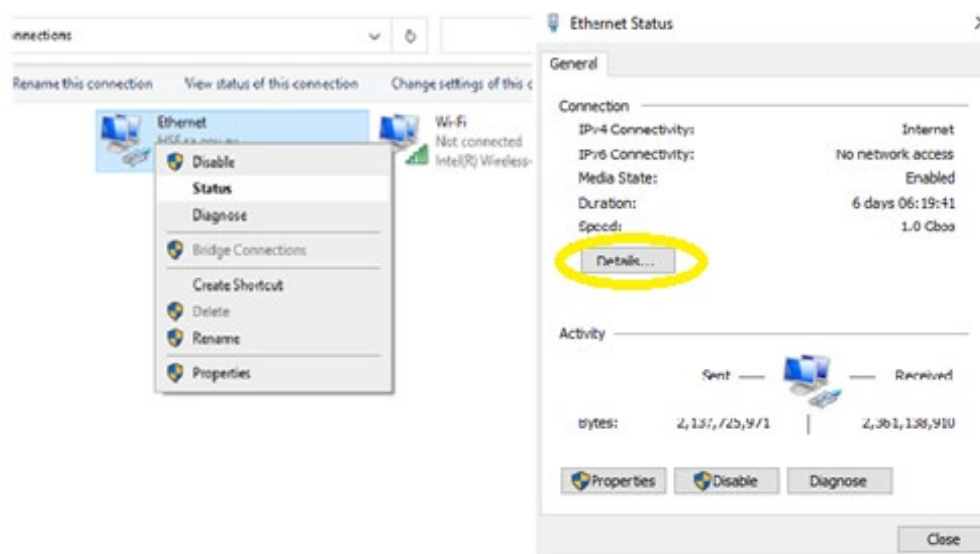


EDI Client connection fix

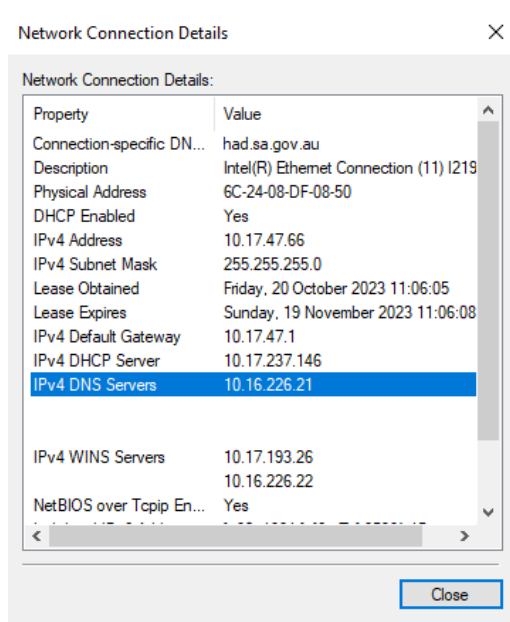
Set Google DNS 8.8.8.8 as an Alternate DNS connecting computers.

To add manual preferred and alternative DNS servers in Windows, follow these steps:

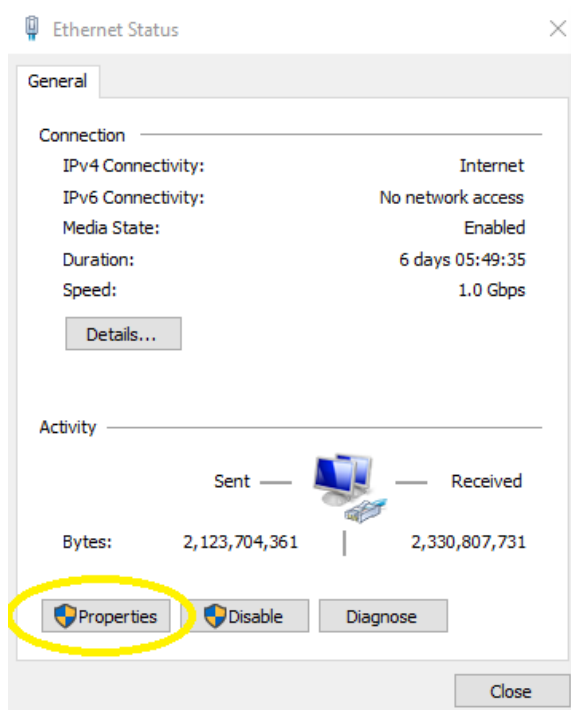
1. Right-click on the Windows Start button and select **Network Connections** or **Open Network & Internet settings**.
2. Click on **Change adapter options** on the right side of the window.
3. Right-click on your active network connection (usually labelled as Ethernet or Wi-Fi) and select **Status**.



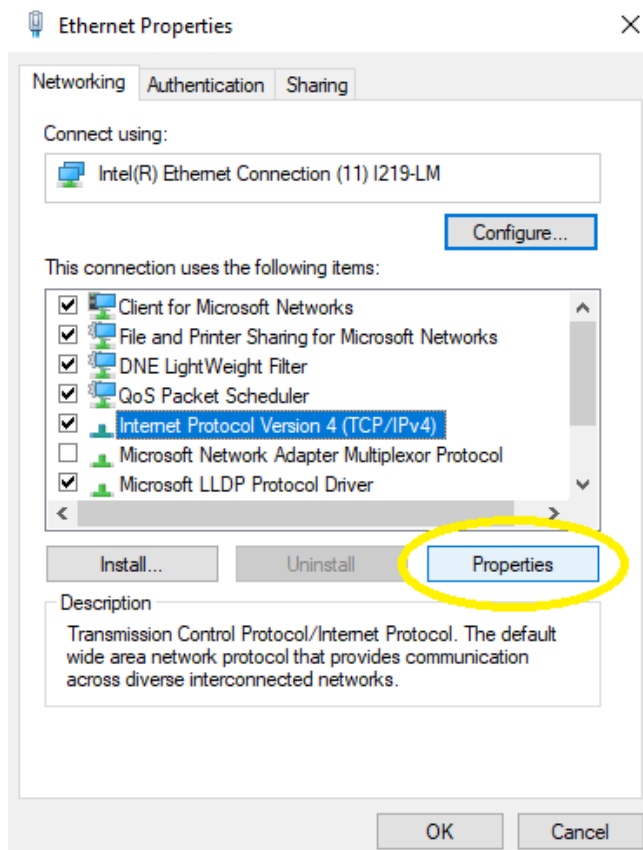
4. Click on **Details** and note down the IPv4 DNS Servers entry and click **close**.



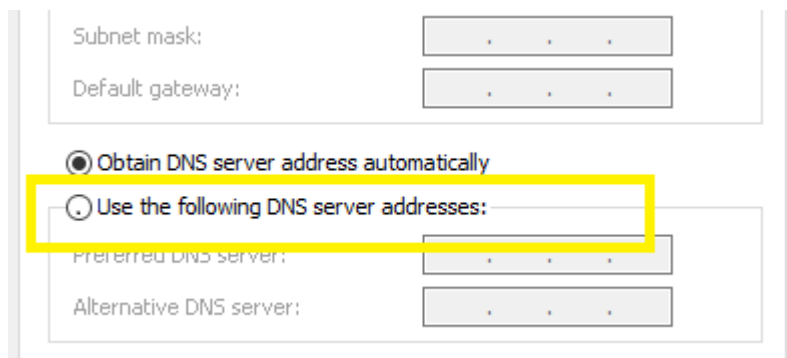
5. Click on **Properties**.



6. In the Properties window, locate and select **Internet Protocol Version 4 (TCP/IPv4)** and click the **Properties** button.



7. In the Internet Protocol Version 4 (TCP/IPv4) Properties window, select the option **Use the following DNS server addresses**



Subnet mask: [. . .]

Default gateway: [. . .]

Obtain DNS server address automatically

Use the following DNS server addresses:

Preferred DNS server: [. . .]

Alternative DNS server: [. . .]

8. Enter the preferred DNS server address NOTED in step 4 in the **Preferred DNS server** field.
9. To add the alternative DNS server, enter **8.8.8.8** in the **Alternate DNS server** field.
10. Click **OK** to save your changes.
11. Click **OK** on all open windows to apply the changes.
12. Your Windows computer will now use the specified DNS servers. If the preferred DNS server is unreachable, it will automatically switch to the alternate *DNS server.has context* menu.